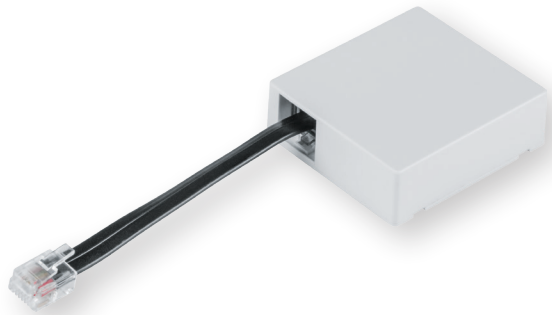


Module for Hörmann drives

Product ref.: 153986A0



Technical specifications

Supply voltage	by Hörmann drive
Ambient temperature	-20 to +60 °C
Dimensions (W x H x D):	48 x 52 x 16 mm
Weight	26 g
Radio frequency band	868.0-868.6 MHz 869.4-869.65 MHz
Typ. open area RF range	250 m

Product features

- Comfortable and smart control of garage doors via smartphone app or a Homematic IP Remote Control
- Integration of Hörmann garage door drives into the Homematic IP smart home system
- Compatible with the following Hörmann drives:
 - SupraMatic series 3 E/P/HT
 - RotaMatic/P/PL series 1 (from 09/2010) and series 2
 - LineaMatic/H/P series 1 (from 10/2009) and series 2
 - SupraMatic/ProMatic series 4 (HCP adapter required, Hörmann ordering no. 4510204)
 - VersaMatic/P
 - WA300 S4
 - WA300 R S4/WA 300 AR S4
- Easily connected by a connection cable with connection pins
- Custom-fit for concealed installation into Hörmann drives (see above)
- Combination with various other Homematic IP devices
- To enable operation, the device has to be connected with one of the following solutions:
 - Homematic IP Access Point with free smartphone app and free cloud service
 - Central Control Unit CCU2/CCU3 with local user interface WebUI
 - Third-party solutions of partners

Logistical data

Product reference	153986A0
EAN code	4047976539864
Short description	HmlIP-MOD-HO
Packing unit	90
Packing dimensions	122 x 112 x 48 mm
Weight incl. packaging	116,2 g

Package contents

Homematic IP Module for Hoermann drives

User manual